

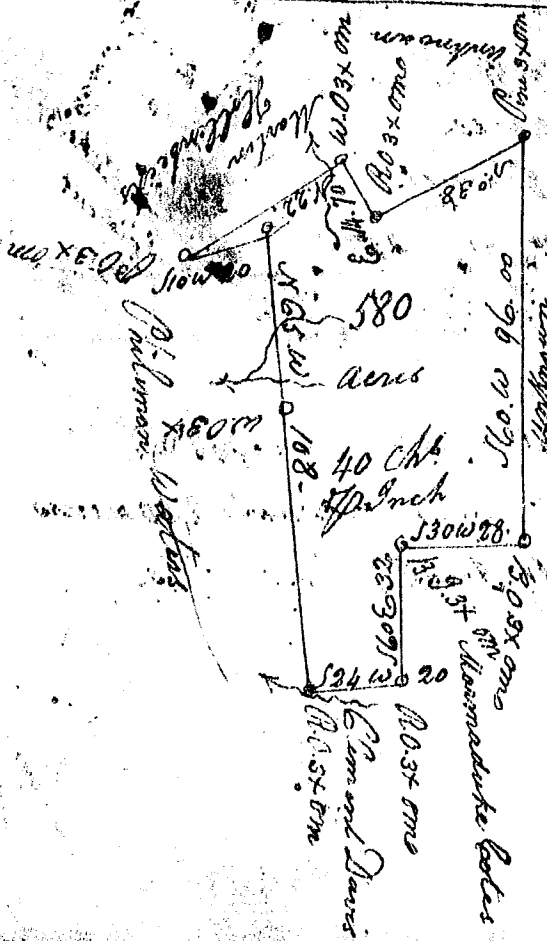
John Durians land

By a Scale of 20 ch. to an inch

N^o Carolina

Pursuant to a warrant from John Thomas Esq^r Com^r of Locations N^o Saluda dated this day I have admeasured and laid out unto John Odell & Joseph Duckett a tract of three hundred and ten acres of land on the branches of Groves River in Newbury County bounding West on James Duncan & Basil Robinson and hath such other Boundaries Shape & Marks as the above plat Represents Surveyed the 29th day of Nov^r 1793

Robert Hanna Esq



N^o Carolina

Pursuant to a warrant from John Thomas Com^r of Locations N^o Saluda dated the 1st Sept^r 1793. I have admeasured and laid out unto James Lindgay a tract of 580 acres of Land on the Waters of Kings Creek and Bush River in Newbury County having such Shape & Marks as the above plat Represents Surveyed the 10th Oct^r 1793

A Pearson Esq